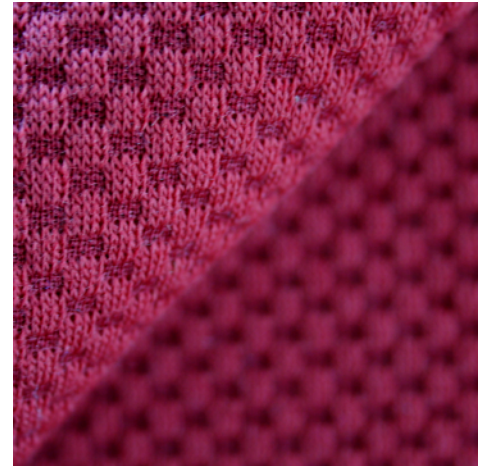
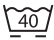





Number of colours	24
Width	160 cm (+/- 2%)
Weight	490 gr/m ² (+/- 5%)
Composition	55% wool 20% polyamide 25% polyester
Design by	FEBRIK



Test	Methode		Result
Abrasion	EN ISO 12947-2	martindale	> 80.000
Pilling	EN ISO 12945-2	5.000 rubs	4
Colour fastness to rubbing	EN ISO 105-X12	dry / wet	3 - 4 / 4
Colour fastness to light	EN ISO 105-B02		6
Flame resistance	EN 1021-1/2 BS 5852 part 1 DIN 4102-B2 US Cal. Tech. Bull. 117 IMO FTP Code part 8	cigarette / match cigarette / match surface ignition	
	please note flammability performance is dependent on type of foam used		
Treatment upon request	flame resistance soil and stain resistance	M1 / Crib 5	
Environment	Oeko-Tex® standard 100 all chemicals used are registered under the REACH legislation ecologically produced in the Netherlands		
Feature	stretch		
Aplication	contract and domestic not suitable for curtains		
Maintenance	   		
	further cleaning advise available on our website		
Notes	<p>slight differences in colour may occur foreign fibres may occur in light colours</p> <p>handle this exclusive knit with care knits are of a different stucture than woven textiles, therefore should be processed and applied correctly</p> <p>please consult the user guideline available on our website</p>		

technical specifications are subject to change without prior notice, updated results available on our website