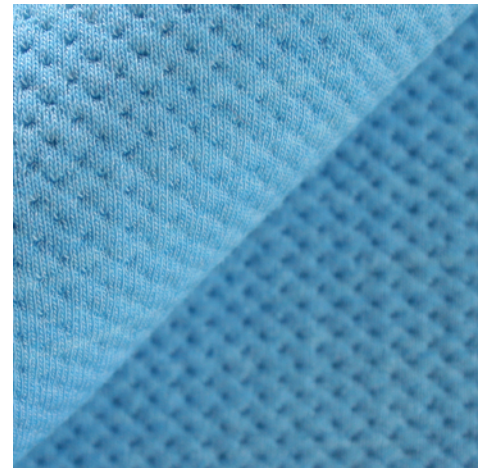


<b>Number of colours</b>	25
<b>Width</b>	160 cm (+/- 2%)
<b>Weight</b>	630 gr/m <sup>2</sup> (+/- 5%)
<b>Composition</b>	25% wool 10% polyamide 15% polyester 50% polyester filling
<b>Design by</b>	FEBRIK



Test	Methode		Result
<b>Abrasion</b>	EN ISO 12947-2	martindale	> 60.000
<b>Pilling</b>	EN ISO 12945-2	5.000 rubs	3
<b>Colour fastness to rubbing</b>	EN ISO 105-X12	dry / wet	5 / 5
<b>Colour fastness to light</b>	EN ISO 105-B02		6 - 7

<b>Flame resistance</b>	EN 1021-1/2	cigarette / match
	BS 5852 part 1	cigarette / match
	DIN 4102-B2	surface ignition
	US Cal. Tech. Bull. 117	





please note flammability performance is dependent on type of foam used

<b>Treatment upon request</b>	flame resistance	M1 / Crib 5
	soil and stain resistance	

<b>Environment</b>	Oeko-Tex® standard 100 all chemicals used are registered under the REACH legislation ecologically produced in the Netherlands
--------------------	---

<b>Feature</b>	stretch
----------------	---------

<b>Aplication</b>	contract and domestic not suitable for curtains
-------------------	--

<b>Maintenance</b>	   
	further cleaning advise available on our website

<b>Notes</b>	<p>slight differences in colour may occur foreign fibres may occur in light colours</p> <p>handle this exclusive knit with care knits are of a different stucture than woven textiles, therefore should be processed and applied correctly</p> <p>please consult the user guideline available on our website</p>
--------------	--

technical specifications are subject to change without prior notice, updated results available on our website